

HYMNS OF ASCENT

Grave Mode

Intonation: #21

Allegro ♩=160

Τὴν αἰχμαλωσίαν Σιών

1



Hav - ing turned the cap - tiv - i - ty of Si - on a -



way from er - ror, do Thou, O Sav - iour, quick - en me



al - so, de - liv - er - ing me from slav - er - y



to the pas - sions.

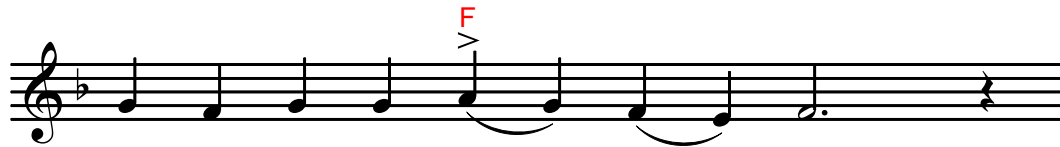
2



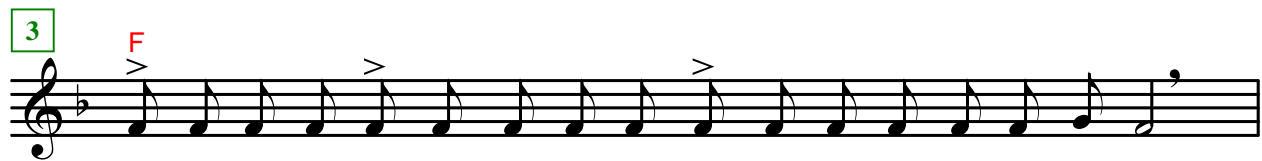
In the south, he that sow - eth af - flic - tions and



fast - ings with tears, the same shall reap sheaves of joy of



ev - er - last - ing nour - ish - ment.



Glo - ry to the Fa - ther, and to the Son, and to the Ho - ly Spir - it.



Both now and ev - er, and un - to the ag - es of ag -



es. A - men.



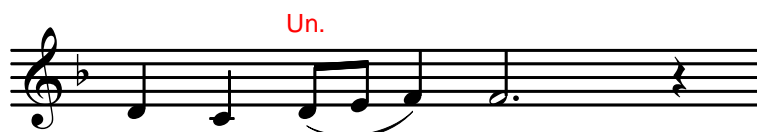
In the Ho - ly Spir - it is there the source_ of di - vine_



treas - ures. From Him com - eth wis - dom, un - der - stand -



ing, and fear; to Him_ is due praise, glo - ry, hon - our,

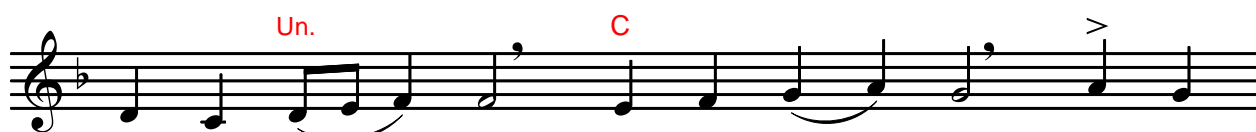


and do - min - ion.

4



Ex - cept the Lord — build the house — of the soul, in vain —



do we la - bour; for with - out — Him, nei - ther

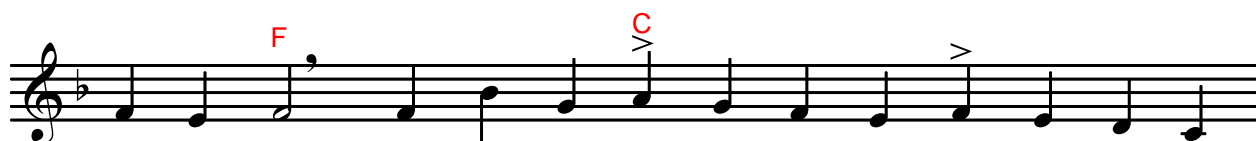


act nor word — is ac - com - plished.

5



Moved by the Spir - it, the Saints, the re - ward of the fruit —



of the womb, bring forth as fruit their Fa - ther's doc - trines of a -



dop - tion.

6



Glo - ry to the Fa - ther, and to the Son, and to the Ho - ly Spir - it.

Grave Mode - Hymns of Ascent

C F C Un.

Both now and ev - er, and un - to the ag - es of ag -

es. A - men.

F C Un.

In the Ho - ly Spir - it all things have ex - ist -

D C F

ence; for He is God_ be - fore all things, Lord of all,

Light un - ap-proach - a - ble, the Life_ of ___ all.

7 F C F

They that fear the Lord, ___ in that they have found the paths of

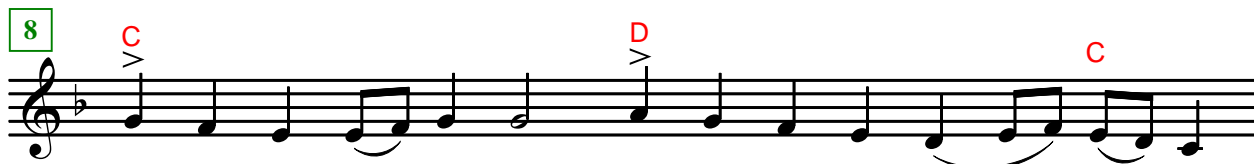
C

life, now and ev - er are bless - ed with un - de -

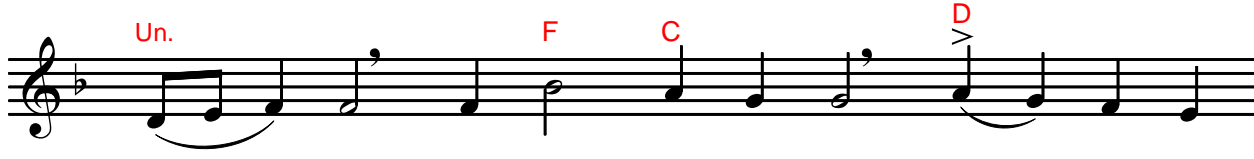
Un.

filed_ glo - ry.

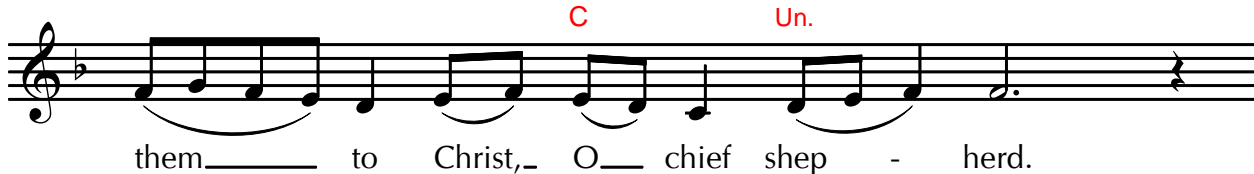
8



See - ing thine off - spring round a - bout thy ta - ble_ as

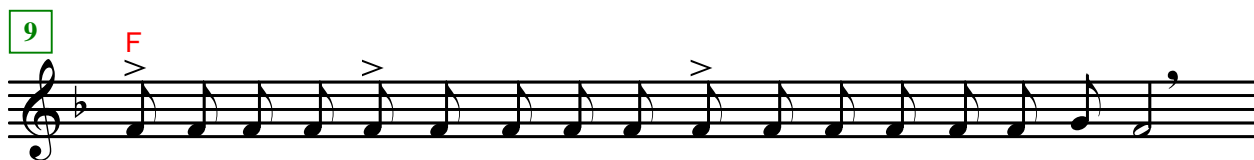


branch - es, re - joice and be glad, of - fer - ing




them_____ to Christ,_ O__ chief shep - herd.

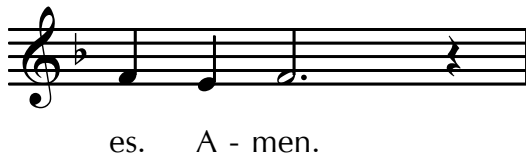
9



Glo - ry to the Fa - ther, and to the Son, and to the Ho - ly Spir - it.



Both now and ev - er, and un - to the ag - es of ag -



es. A - men.



In the Ho - ly Spir - it there is a depth of gifts, a



wealth of glo - ry, a great a - byss of judg - ments; for



He is to be wor - shipped as one in glo - ry

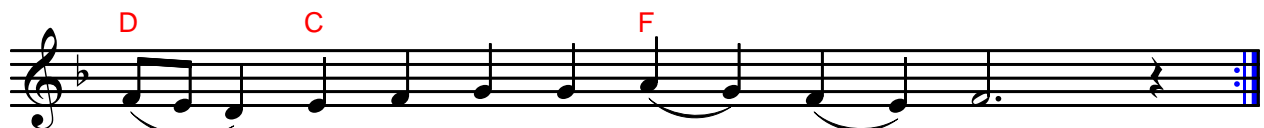


with the Fa - ther and the Son.

10 and 11



A - rise, O Lord my God, let Thy hand be lift - ed high; for -



get not Thy pau - pers to the end. *(twice)*

Canonarch:



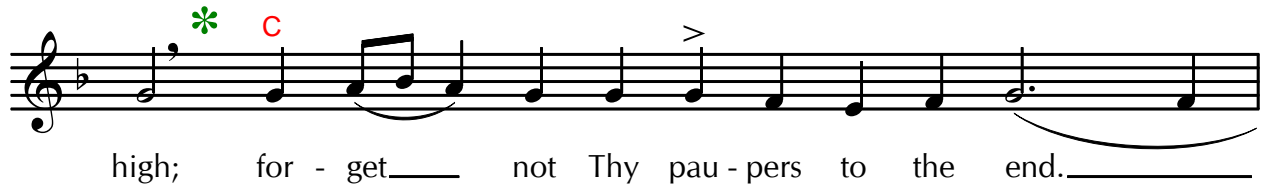
I will con-fess Thee, O Lord, with my whole heart, I will tell of all Thy



won-ders.

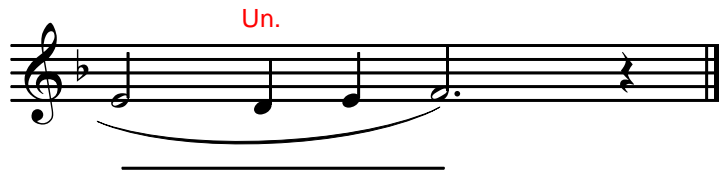


A - rise, O Lord my God, let Thy hand be lift - ed



high; for - get not Thy pau - pers to the end.

A musical staff in G major (one sharp) and 4/4 time. The melody consists of a half note G4, a quarter note A4, a quarter note B4, a quarter note C5, a quarter note B4, a quarter note A4, a quarter note G4, a quarter note F4, a quarter note E4, a quarter note D4, a quarter note C4, and a half note B3. A green asterisk is above the first G4, and a red 'C' is above the second A4. A slur covers the notes from the second A4 to the final B3. An accent (>) is above the first B4.



Un.

A musical staff in G major (one sharp) and 4/4 time. The melody consists of a half note G4, a quarter note A4, a quarter note B4, a quarter note C5, and a half note B3. A slur covers the notes from the first G4 to the final B3. A red 'Un.' is above the first G4.

** According to some traditions, the second half of this final verse is completed by the other choir.*